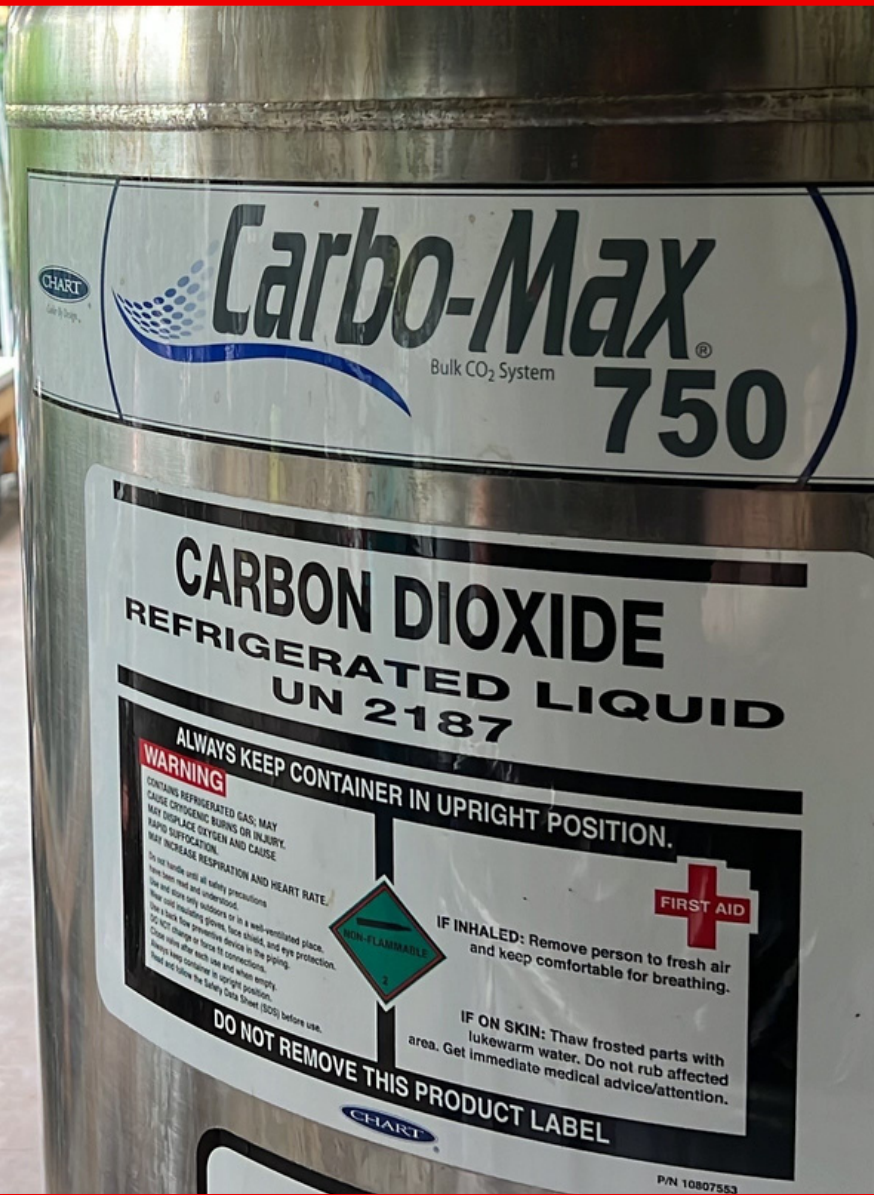


CANNABIS

GASES, PRODUCTS & SERVICES
FOR GROWERS & PROCESSORS



WWW.GENDCO.COM

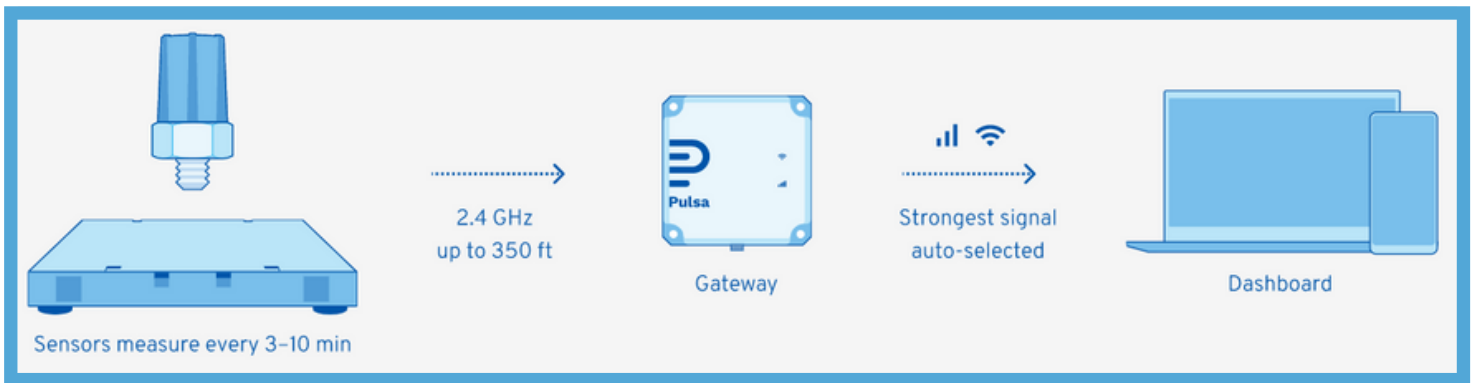
TELEMETRY MONITORING



NEVER RUN OUT AGAIN!

A seamless sensor-app system

Always be on top of your inventory with our web dashboard, iOS and Android apps. The surprising simplicity of our sensors gives them industrial durability and means they work right out of the box. The intelligent dashboard uses our own AI algorithms to alert you to critical stock and unexpected problems. Putting the brains in one place also lets us relentlessly roll new features to our customers, both large and small. If your needs are more advanced, we are ready to work with you adding the sensors or features your business needs.



GREENHOUSE CARBON DIOXIDE ENRICHMENT



BULK CO2 APPLICATIONS

Enrichment of cannabis plants via supplemental carbon dioxide shortens crop cycles, improves quality, and increases yield up to 30%. Use of Chart's vacuum jacketed liquid CO2 storage containers offer several benefits over competitive technologies and storage schemes

- Vacuum jacketed containers require no supplemental refrigeration systems
- On site CO2 storage provides better climate control vs. CO2 generators which produce heat and increased humidity levels
- A much safer installation with no open flames, flammable fuel storage, or risk of carbon monoxide poisoning
- Tanks and vaporization capacity can be sized to economically support existing grow house operations and provide flexibility for future growth
- Tanks can typically be operated without any need for a source of power

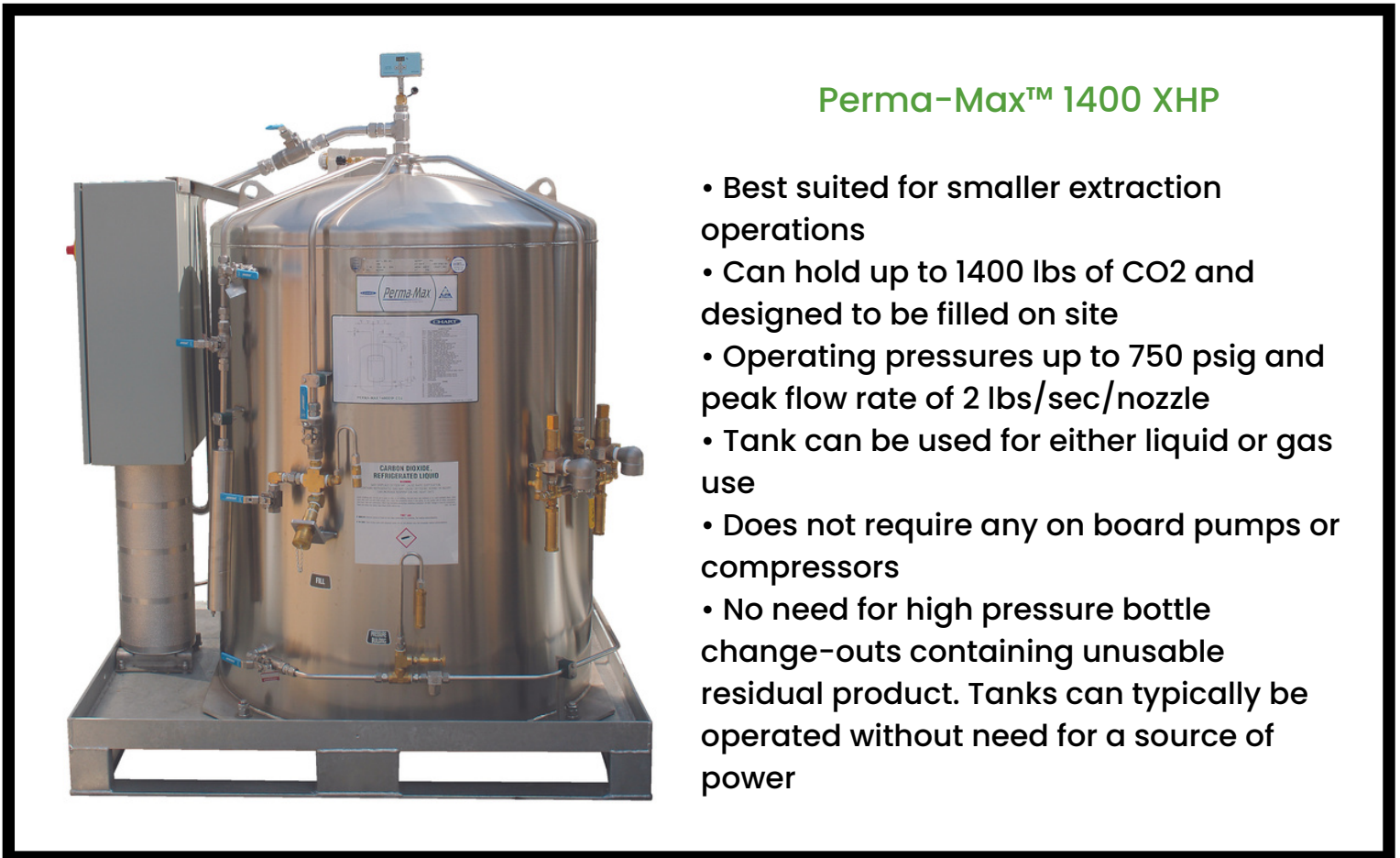


EXTRACTION OPERATIONS

Supercritical/Subcritical CO2

Pressurized carbon dioxide advantages over other solvents commonly used for extraction operations

- CO2 is residue free. All CO2 gases off when exposed to ambient conditions
- Non flammable and the safest of all methods of extraction
- Heat and pressure kills any micro-organisms that might be left in the plant
- “Tunable” by varying pressures and temperatures to better control separation





Trifecta® Pro CO2 Supply System

- Designed for large extraction operations
- Operating pressures up to 850 psig & continuous flow rates up to 900 lbs/hr
- System utilizes liquid CO2 off of a standard bulk CO2 tank (6-50 ton)
- System does not require any on board pumps or compressors
- No need to shutdown operations during CO2 deliveries to the bulk tank

EXTRACTION GASES AND OTHER GAS SOLUTIONS



Isopropyl Alcohol
(5 Gallon and 55 Gallon Drum)
Ethanol
N-Heptane
Nitrogen
ISO Butane
N-Butane
N-Propane

DRY ICE SOLUTIONS



MADE WITH FOOD GRADE QUALITY CO2



DRY ICE RICE & PELLETS

16mm pellets available



DRY ICE SHIPPING CONTAINERS

Available in multiple sizes



LARGE QUANTITIES

Ability to manufacturer
75,000 pounds + a month



STATEWIDE SHIPPING

Local production facilities with
statewide shipping capability



GENERAL DISTRIBUTING CO.

Gas Monitoring Solutions for Grow Operations and Extraction Facilities



Beacon Controllers

- 1-8 Channel fixed systems controller
- Digital readout
- Weather proof NEMA 4X enclosure
- Audible alarm
- Up to 3 configurable alarm relays per channel
- Optional strobe & battery backup

S2 Sensor

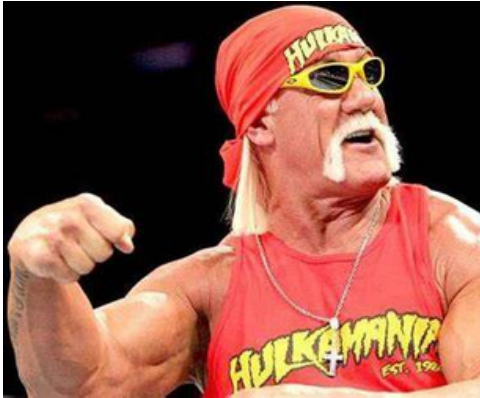
Available gases:
LEL, H₂S, CO, PPM H₂, and CO₂
Infrared sensor for combustibles and CO₂
Patented water repellent sensor coating
4-20 mA Output

Direct Connect Sensor

Available gases:
LEL, O₂, and CO₂
Remote sensor capability
Explosion proof available
No transmitter required
Connects directly to most RKI controllers
Stainless steel enclosure available



MEET OUR EXPERTS



JAKE GUSTAVSEN

Jake has been with Gendco since 2003 and currently works out of Bozeman, MT.

jake@gendco.com

CODY OTIS

Cody has been in the industry since 2005. He oversees our Cannabis customers in Billings, MT.

cotis@gendco.com



Jake and Cody hit the ground running in Montana when recreational marijuana became legal in 2022. From medical grow operations expanding, to brand new operations building from the ground up. These guys have been the go to salespeople for everything gas, safety and overall ideas for Montana Cannabis. If you have any questions at all, do not hesitate to reach out to either of these two.





GENERAL DISTRIBUTING CO.



WHY WE EXIST

General Distributing Company is a 3rd generation family owned business dedicated to investing in, inspiring, and empowering people so that together we succeed and grow.

We've been serving our customers and local communities since 1948. We have an established group of industry experts that possess a valuable combination of personalized service, a solution oriented mindset and industry experience. Our team serves you best by understanding the individual needs of your company and delivering products that help you be more productive, more efficient, and more profitable. A steadfast commitment to living our core values is the backbone of how we operate.

WE VALUE RELATIONSHIPS
WE DO WHAT IT TAKES
WE DO THE RIGHT THING
WE DEVELOP OUR PEOPLE
WE ARE RESULTS-DRIVEN



BRANDS YOU TRUST



INSTRUMENTS

SERVING MONTANA SINCE 1948

WWW.GENDCO.COM